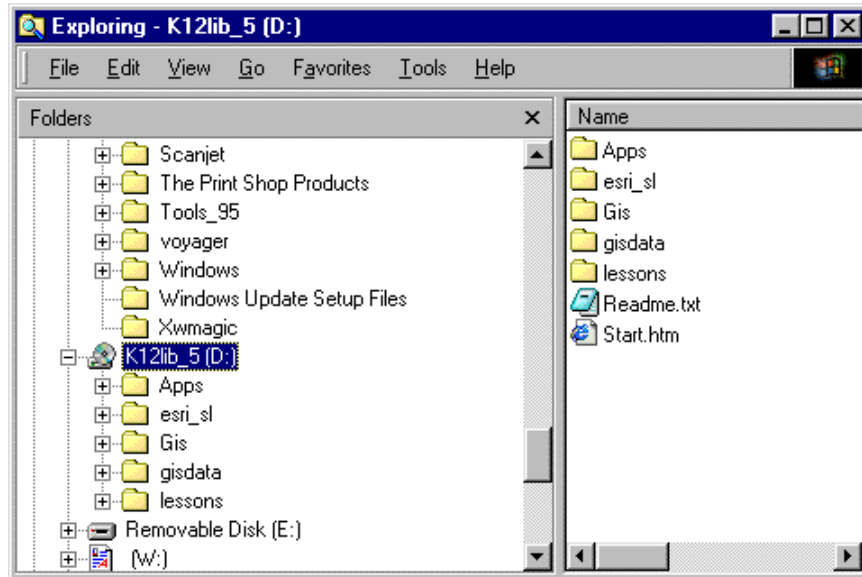


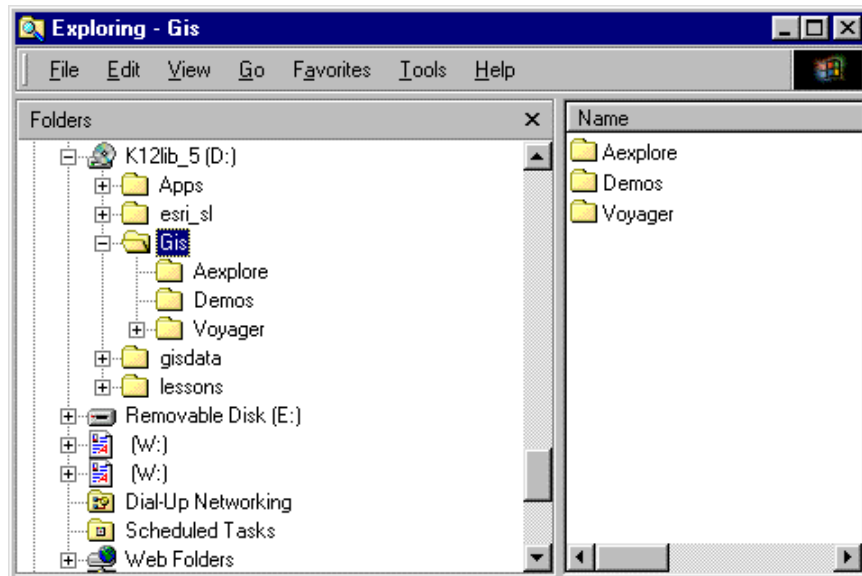
ArcVoyager Special Edition *GIS for School Edition*

How to Install ArcVoyager Special Edition

1. Go to **Start, Programs, Windows Explorer**.
2. Scroll down on the left frame and **double click** on the "**d**" drive.

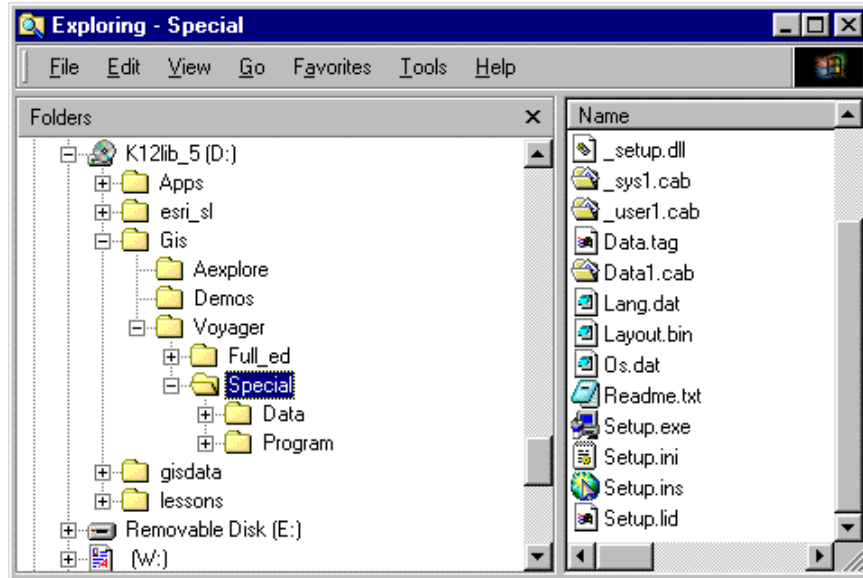


3. Next, **double click** on the "**Gis**" folder.



Installing ArcVoyager Special Edition

4. Next, **double click** on the "Voyager" folder.
5. Then **double click** on the "Special" folder



6. Scroll down on the right side and **double click** on the file "Setup.exe".
7. This will start the install of **ArcVoyager Special Edition**.
8. Follow the on-line screen directions at this point.
9. When the program is totally installed, you will get an error message related to something in the registry. **THIS IS NORMAL**. Click on "Ok".
10. The next pop up screen will say the install is complete. Click on "Ok".
11. You should be back to your Windows Explorer screen. *There is a very strange problem with the correct fonts showing up. The problem especially occurs with Windows 98. There is a simple fix so just do the following steps to make sure.*
12. In the left window, scroll down to the **Windows** folder and **double click** on it.

Installing ArcVoyager Special Edition

13. **Double click** on the **Fonts** folder.
14. Go to **View** at the top menu, click on it and select **Refresh**.
15. Close **Windows Explorer** - you are all set up.
16. To access **ArcVoyager**, go to **Start, Programs, ArcVoyager** and click on **ArcVoyager Special Edition** to start the program.
17. You are ready to GO! *Have FUN!*